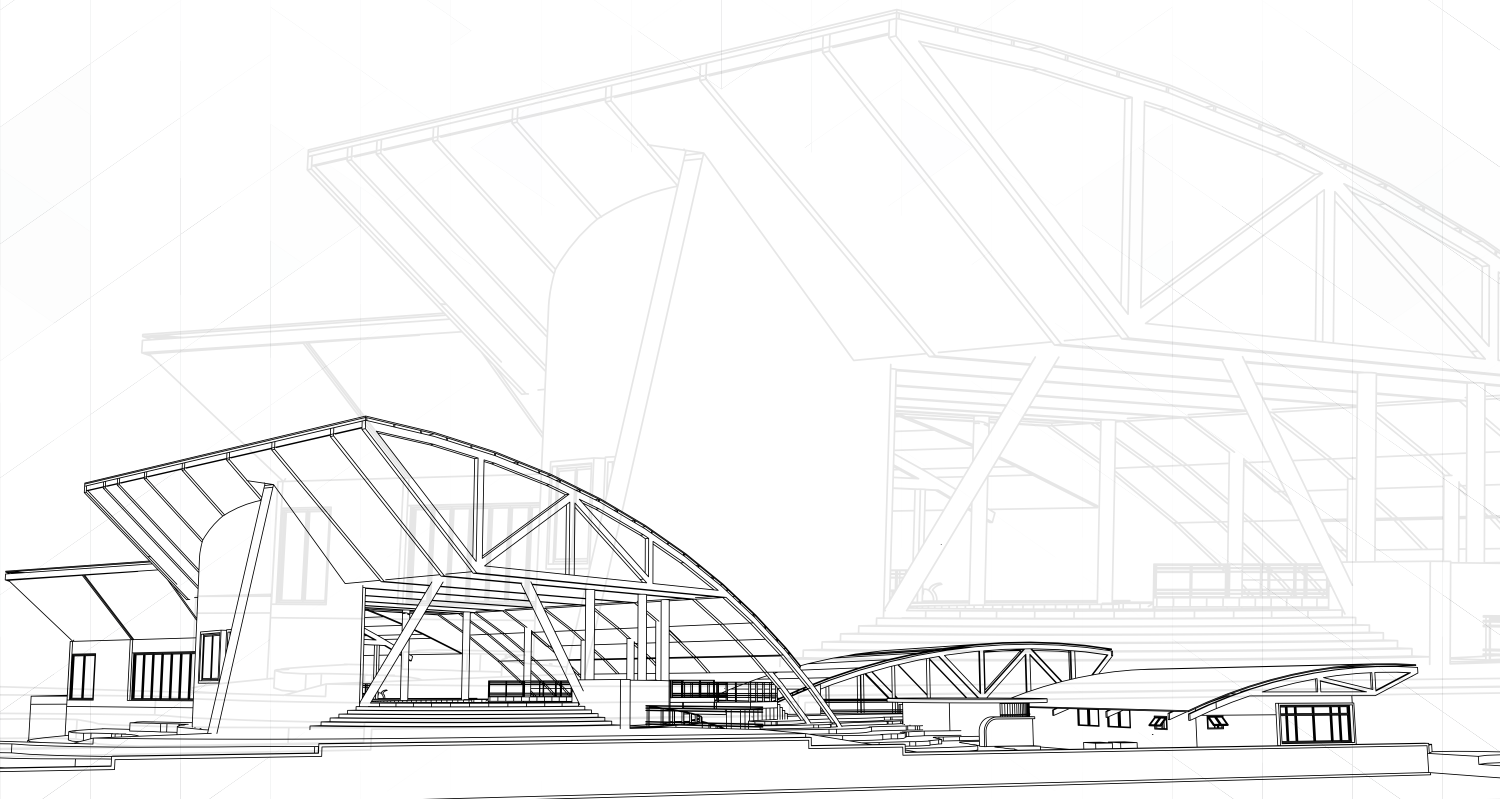




SHAJAL ENGINEERING PVT. LTD.

Technology, Engineering & Development Alliance.



"Building Your Vision, Engineering Success"

SHAJAL ENGINEERING PRIVATE LIMITED,
Plot - W211A Midc, Talaja, Navi Mumbai, Maharashtra 410208



Shajal Engineering Private Limited(SEPL) founded by
LATE SHRI KSHIROD B. ROY

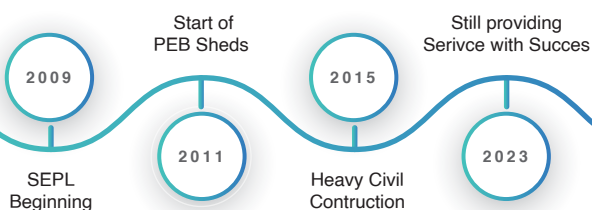


About Us

"Building Your Vision, Engineering Success"

Shajal Engineering Private Limited(SEPL) was incorporated in 07/07/2009 by Late. Kshirod Baran Roy with the vision to bring excellence in Mechanical Engineering and civil Engineering sector by introducing new technology with dedicated and Trained Staff and Workers. SEPL is first choice for all of our client companies.

SEPL is a dynamic and forward-thinking industrial shed manufacturer and civil construction company. With a proven track record of over a decade, we have established ourselves as industry leaders, delivering exceptional quality and innovative solutions. Our team of experts is dedicated to providing reliable, eco-friendly, and streamlined services that surpass the expectations of our clients.



Mission

"Building Beyond Boundaries, Creating Enduring Structures"

Our mission is to revolutionize the industrial infrastructure landscape by delivering cutting-edge industrial shed solutions and civil construction services. We strive to empower our clients' growth and success by offering them superior technology, customized designs, efficient project management, and unmatched customer service.



Vision

"Engineering Dreams, Constructing Realities"

Driven by a vision of excellence, we aim to be the preferred choice for manufacturing companies and warehouse owners seeking top-of-the-line industrial sheds and civil construction services. We envision creating sustainable and future-proof structures



USP

SEPL's USP lies in our unwavering commitment to excellence, innovation, and customer satisfaction.

SEPL Team



**Shukla Rani Kshirod Roy
(Director)**



**Swapno Kshirod Roy
(MD,CEO)**



**Shajal Kshirod Roy
(Project Head)**

HEAVY STEEL FABRICATION & ERECTION SERVICES

SEPL, along with its subsidiary company, has executed numerous light and heavy fabrication projects, as well as machinery installations, across various industries. Their primary objective is to deliver value and quality consistently.



**Hpcl - Chembur - Dyke
Fabrication.**



**Chloride metal - PUNE - Platform
fabrication and Erection**



**Exide industries - Pune -
Chimney Supply**



L&T - Mumbai - Heavy Fabrication



**Exide Industries - Taloja - Mill
Installation.**

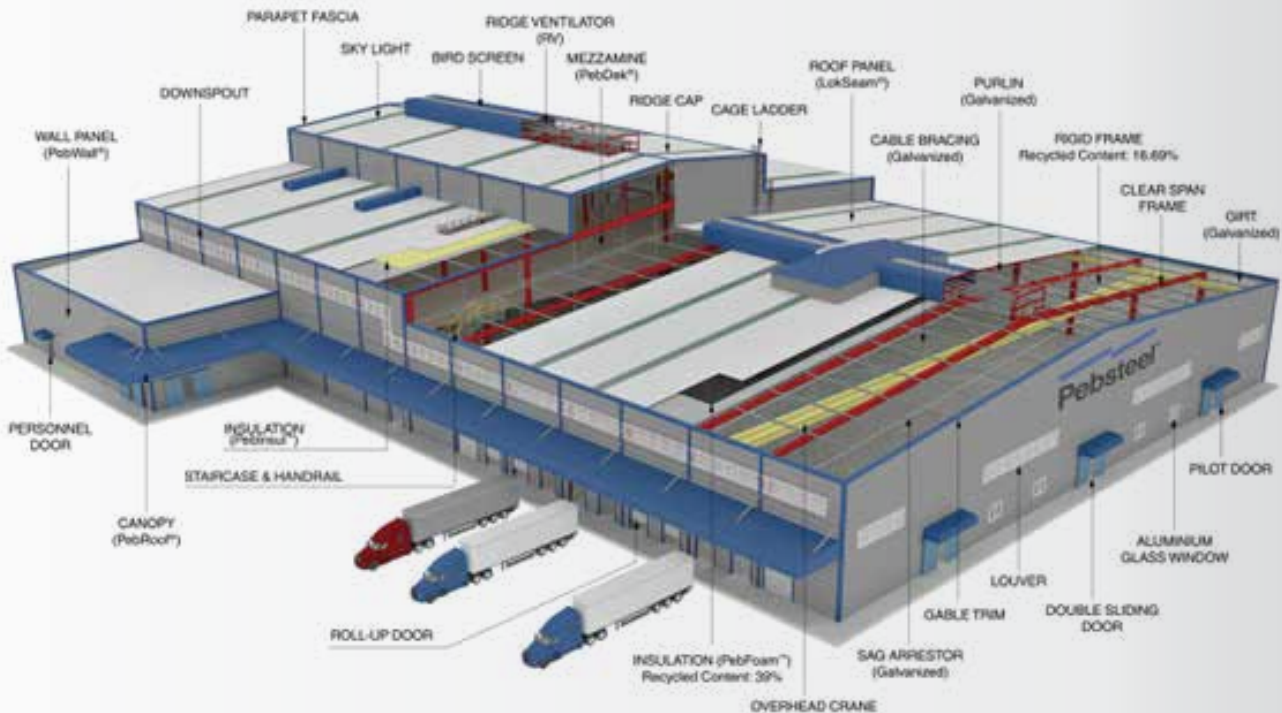


**Exide industries - Taloja -
mezzanine**

Products & Services

Turnkey projects in Pre-Engineered Building:

At Shajal Engineering Private Limited, we are proud to offer turnkey project solutions that provide our clients with comprehensive and ready-to-use products or PEB facilities. Our expertise in handling turnkey projects allows us to deliver seamless and hassle-free solutions from inception to completion.



What is (PEB) ?

PEB stands for Pre-Engineered Building. It refers to a construction method where the structural components of a building are designed, manufactured, and assembled in a factory before being transported to the construction site for installation. PEBs are typically made of steel and are known for their efficiency, speed of construction, and cost-effectiveness.

1. Design
2. Factory Fabrication
3. Quick Construction
4. Cost-effectiveness
5. Customization
6. Versatility
7. Structural Efficiency
8. Expansion and Flexibility
9. Sustainability

- Services offered include maintenance for shed and building structures, as well as roof sheet replacement.
- Choose Shajal Engineering Private Limited for reliable, technologically advanced, and efficient PEB solutions tailored to your specific needs. Trust our expertise and commitment to quality for exceptional results.

Why Choose Us?

Our organization has a long-standing commitment to a customer-centric and community-oriented approach. Our dedicated staff prioritizes client satisfaction, backed by our strong market expertise. Clients prefer us for:

- Professionalism
- Innovation
- Timely Delivery



Roofing Products

Product ID

Product Name

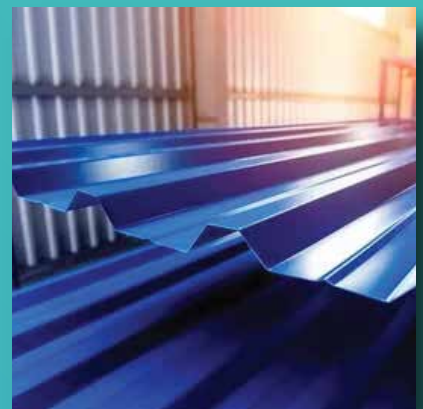
SEPL – Tough Roof

- 1) Profile Sheet – STR - P 1010
- 2) 3Rib Profile Sheet – STR - 3RP 1000
- 3) 2Rib Profile sheet – STR- 2RP 1000
- 4) Box Profile Sheet – STR - BP – 930

Material :

- 1) Galvanized Steel
- 2) Galvalume
- 3) Aluminum

PPGI 80 – 120GSM,
PPGL STR – Z70GSM
Yield Strength – 200 to 345 MPA



SEPL - TR

Decking Sheet
(STR - DS-960)

SEPL - TR

C & Z Purlins

Technical & Material :

- 1) Thickness : 1.5mm – 3 mm
- 2) Material : Galvanized steel
- 3) Length : Upto 13 Meter
- 4) Yield strength : 245Mpa to 345MPa.



Product ID	Product Name	
SEPL - TR	CG corrugated sheet Material specification : 1) 13 Corrugation 910 mm width 2) 15 Corrugation 1220 mm width	
SEPL - TR	Curved Roofing Sheets	
SEPL - TR	PUF Roof & Wall Panels	
SEPL - TR	Rockwool and Glasswool Panels	
SEPL - TR	Double Skin Insulated Roofing Sheet	
SEPL - TRAC	Turbo Air ventilators Material Specifications: Stainless steel grade 202, 304, 430 & PP	
SEPL - TRAC	Polycarbonate Sheet Material thickness: 1.5mm , 2mm , 3mm	
SEPL - TR	Roofing Accessories. 1) Profiled Ridge 2) Corner Flashing 3) Profiled gable flashing 4) Plain Ridge 5) Profiled corner flashing 6) Box gutter 7) Eave Gutter 8) Downtake pipe.	
SEPL - TR	FRP (Fibre Reinforced Plastic) and PC (Polycarbonate) Base (for ventilators)	
SEPL - TR	FRP (Fibre Reinforced Plastic) Sheet (For Ventilators)	

RCC DRAINAGE SYSTEM



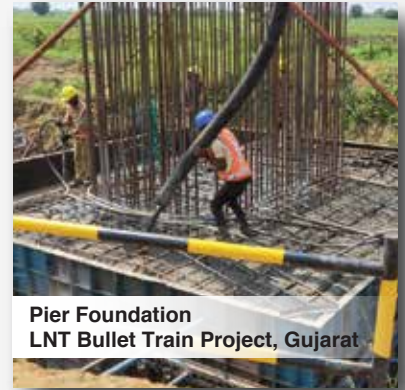
RCC Drainage System.
LNT, Mumbai Coastal Road Project

HEAVY MACHINERY FOUNDATION



Chimney Foundation HPCL,
Mahul Navi Mumbai

BULDING SUPER STRUCTURES



Pier Foundation
LNT Bullet Train Project, Gujarat

PVC Lining



PVC Lining
Exide Industries, MIDC TALOJA

BUILDING CONSTRUCTION



Deter Room Construction.
Owen Corning, Taloja Midc.

INDUSTRIAL BOUNDARY



RRM Boundary Wall
HPCL, Chembur Mumbai.

FLOORINGS

Vacuum-dewatered high-strength concrete flooring:

Variable known as VDF or Tre-mix floor, it continues to be the most preferred and cost available floors for various industries for many years.



PVC LINING FLOORING:

SEPL - PVC Flexible sheets are highly chemical resistive sheets which are used for floor/Pit/Tanks protection from various effects and defects of chemical involved in Processes. They can be used as protection cover up to 90 C Temperature.



Product Name:

SEPL-TF PVC Flexible Sheet.

SEPL-TF-PVC Flexible Sheet Specification

Size	a) Thickness: 1 mm to 10 mm b) Width: 200 mm to 1400mm c) Length: 2000 to 20,000 mm
Surface Finish	Chequered or Plain
Form Flexible	Semi Soft Material
Appearance Color	Desirable
Standard size	50-55 D
Flammability	Non Flammable
Specific Gravity	1.35-1.45
Vicat Softening Point for 3 mm Standard SEPL	80 C
Moisture content for 3 mm Standard SEPL	0.15%

Acid Resistant Brick/Tile lining

SEPL's Acid Proof Bricks are made of supreme quality raw materials and using advanced machinery and techniques. Owing to their optimum resistance against chemicals, acids, high temperature and corrosion.



Product Name:

SEPL – Alkali Resistant Bricks

Acid Proof Bricks Specification

Type	Acid Proof Bricks
IS	4860
Material Used	Highly Durable & Qualitative Acid Proof
Application	<ul style="list-style-type: none">• Cement plants• Power plant• steel plants• Chemical Plant• Pharmaceuticals• Battery Rooms• Industrial Flooring• Paper Mills• Ware House• Food Processing Units etc....
Size	<ul style="list-style-type: none">• 230 x 115 x 75 MM• 230 x 115 x 65 MM• 230 x 115 x 38 MM• 230 x 115 x 25 MM• Provide Special Size As Per Requirements
Main Advantage	Size Variation Is Very Less

Chairman Note

Dear Friends,

SEPL's foremost vision is to accommodate Highly Engineered PEB's with Quality Mechanical and Civil engineering works in every part of India so we can contribute and help in the growth of the Indian Economy. We want to provide employment as much as possible with a great contribution to our country's infrastructure development. New constant innovation in our product and services will be one to make the PEB's and our other products and services economic, productive, time-saving, and safety- oriented.



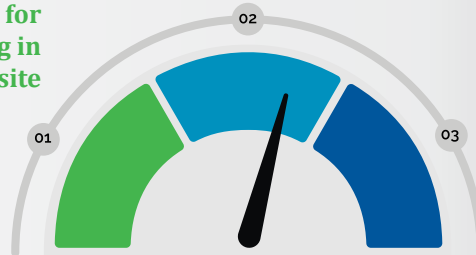
SEPL's Oath

Safety measures in place to ensure the well being of employees, clients, and the environment.

Training for working in factory and site

PPE for Factory & worksite

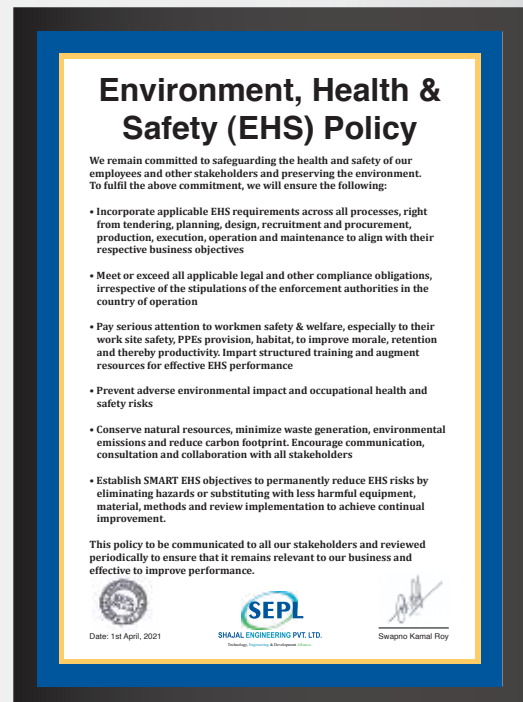
Fire extinguisher and etc for Factory & Site



ISO Certificate



EHS Policy





Exide Industries - Taloja - Shed Project



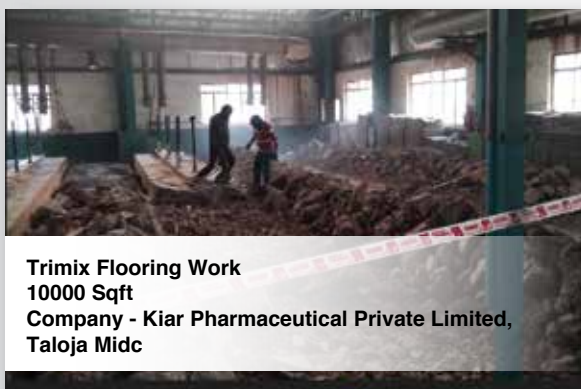
SEW - Taloja - Shed Project



L&T - Mumbai - P&M PEB Shed Project



Pune - Shed Project



**Trimix Flooring Work
10000 Sqft
Company - Kiar Pharmaceutical Private Limited,
Taloja Midc**



**Heavy Rcc Work
100kilo Liters
Company - L&t Mahsr C4 Section
4 Project.**



**Pavement Drainage System
4.5 Kilometers
Company - Bullet Train Project,
LNT Gujarat Section 3.**



**Public Under Pass (PUP)
LNT, Mumbai Costal Road Project.**

Our Footprints Across India

- Chloride Metal - Pune
- Exide Industries Ltd - Pune

- Exide Industries Ltd - Ahmednagar, Maharashtra
- L&T Ltd - Mumbai
- Godrej & Boyce - Vikroli

- Tatsuno India Pvt Ltd - Talaja, Navi Mumbai
- L&t (Building & Factories) - Seawoods
- Exide Industries Ltd - Talaja, Navi Mumbai
- Owens Corning India Pvt Ltd - Talaja, Navi Mumbai
- Asahi Glass India Ltd - Talaja, Navi Mumbai
- Twiga Batteries Pvt Ltd - Talaja, Navi Mumbai
- Naik Oceanic Pvt Ltd - Talaja, Navi Mumbai
- Berger Paints India Limited - Talaja Navi Mumbai

- L&t (Defence) - Karwar, Karnataka

Clients



and many more...



+91 9987800999 /
+91 7942797366 /
+91 9323410551 /
+91 8928863557 /



Sale@sepltech.com
s.e.p.Limited2010@gmail.com



www.sepltech.com

